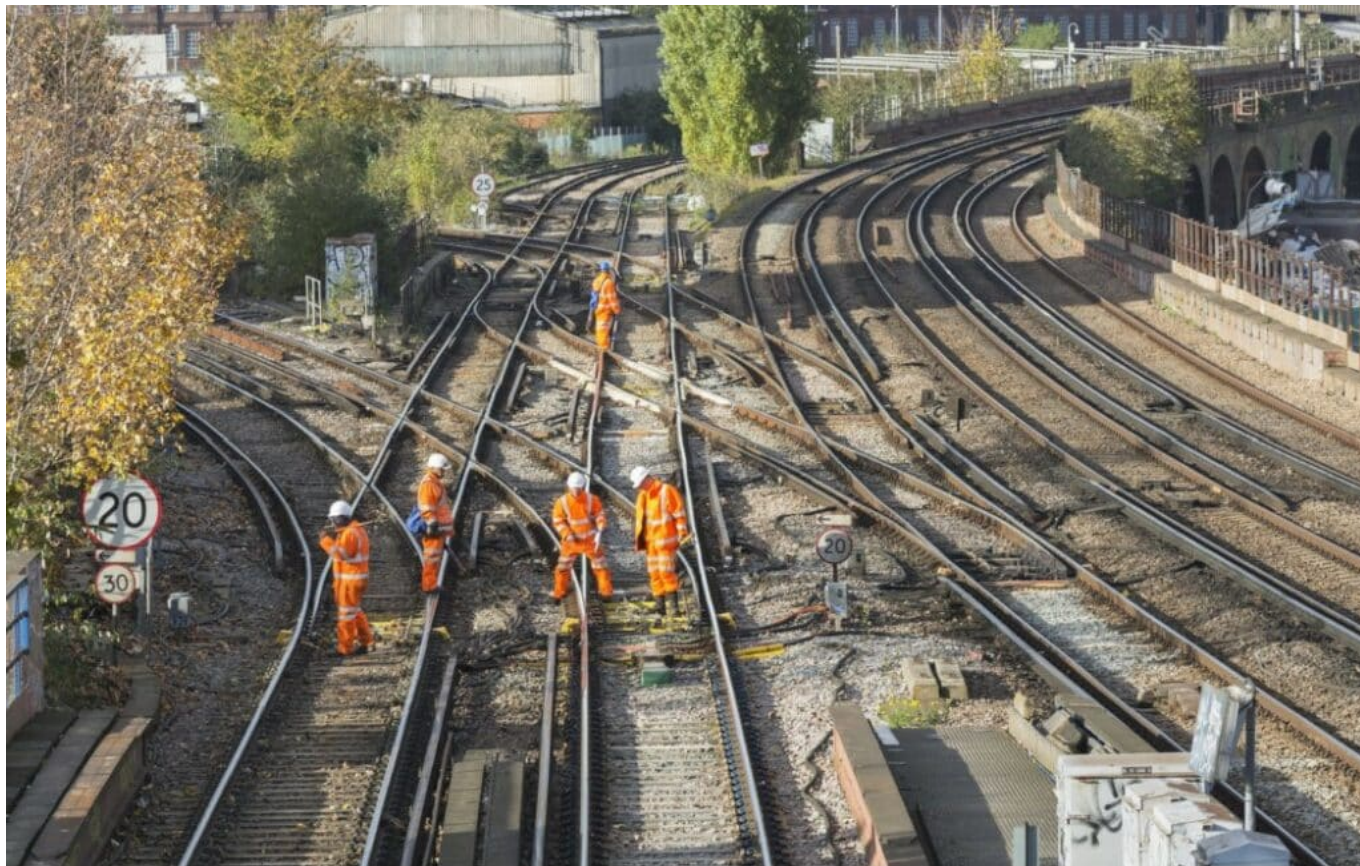


Alstom East Anglia Southern

October 23, 2023



Onwave OWL Geofencing technology is enhancing safety on the re-signalling upgrade project for Eastern Anglia

When Alstom was exploring how they could keep their track worker teams safe, the innovative solution offered by Onwave OWL was deemed an ideal safety tool for them to use on a major project they had been selected under tender to deliver.

Alstom created a list of requirements for Geofencing technology which included:

- Enhancing situational awareness for track workers
- Prevention of people/plant interface
- Geotagging of asset boards
- Enhancing situational awareness for track workers
- Monitoring productivity on renewal works
- The location and tracking of engineering trains entering a possession site
- Monitoring the safety of less experienced team members, who are more likely to stray from safe working zones

Visit <https://marketing.onwave.com/onwave-connectivity/alstom-east-anglia-southern> for more details.