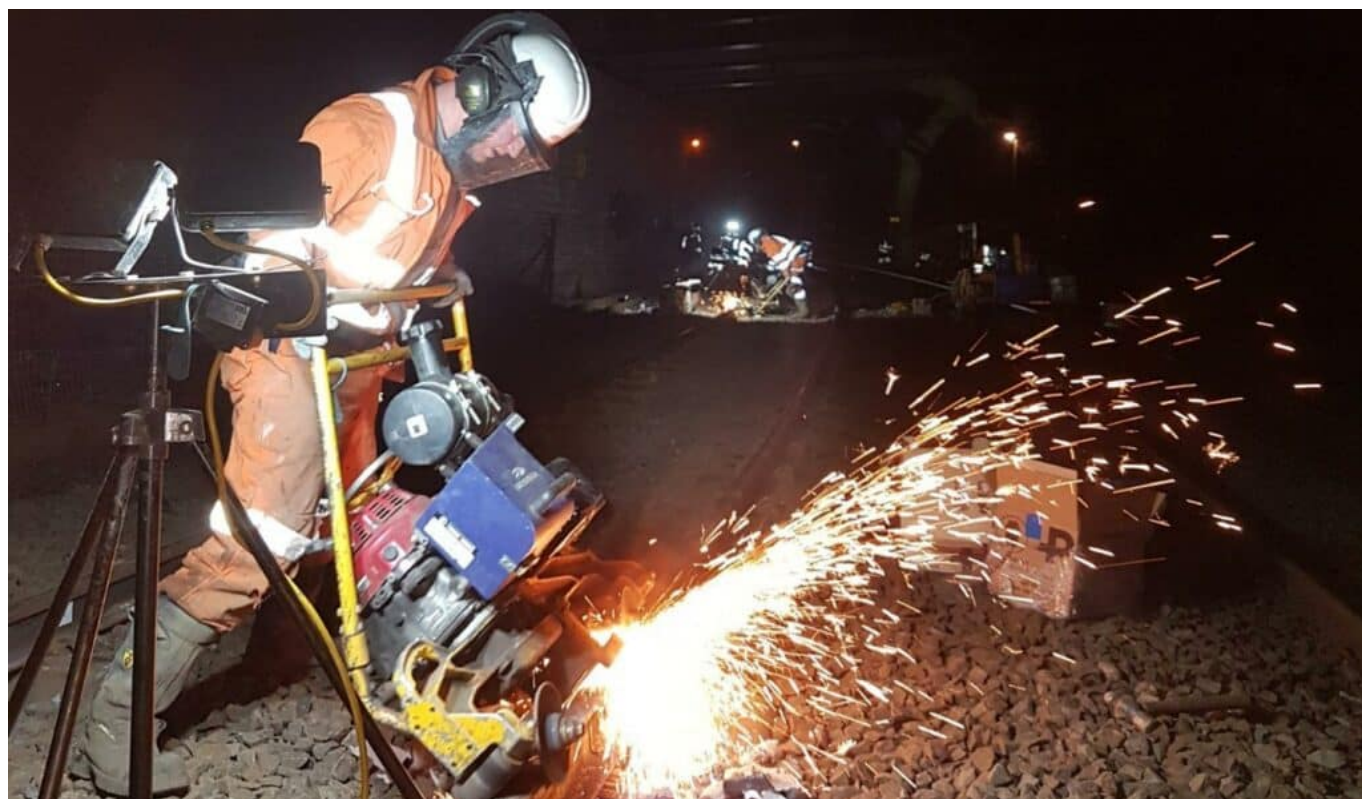


Essential maintenance works on the West Midlands Metro line progressing well

April 28, 2020



Essential track replacement work on the West Midland Metro network is progressing well, with construction teams making significant steps towards completion.

The works are being undertaken outside normal Metro operating hours to prevent disruption to services that many key workers are relying on during the Coronavirus outbreak.

Colas Rail UK Tweeted to say over 50% is complete with the majority of track laid and welded in place between the Crescent and Priestfield tram stops.

A Midland Metro Alliance spokesperson said: "The Midland Metro Alliance is currently carrying out essential maintenance works on the current West Midlands Metro line.

"The track between The Crescent and Priestfield tram stops is approaching the end of its operational life and our teams are carrying out these works to ensure a reliable service for customers, particularly key workers who rely on trams to provide vital support to our local communities during the Covid-19 outbreak.

"Great progress has been made during the overnight maintenance with much of the track now replaced and welded into place. We are delighted to be working with West Midlands Metro to help to keep our vital key workers mobile during these uncertain times."

Photo credit: West Midlands Metro