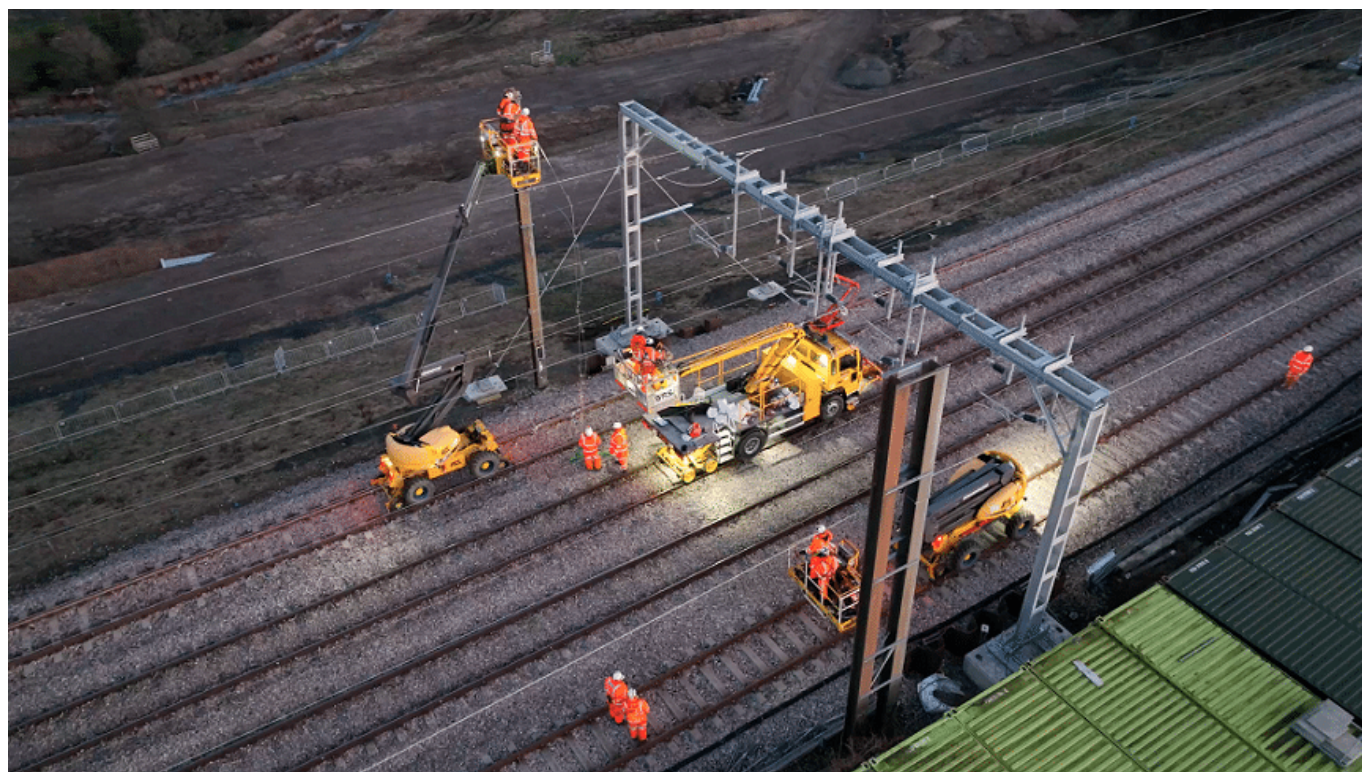


eviFile's digital methodology assists ARQ in Network Rail embankment safety project

April 27, 2023



Leeds-headquartered digital progressive assurance and evidence capture solution, [eviFile](#) has enabled ARQ to efficiently implement a complex overhead line electrification (OLE) project.

The engineering works form part of a £13.2m programme by Network Rail to stabilise a railway embankment on the East Coast Mainline, near Morpeth Station in Northumberland.

Deployment of eviFile's digital methodology gave ARQ's multi-skilled team, including construction managers, supervisors, and engineers, immediate oversight of all elements of the electrification works.

The weakened embankment had come as a result of ground movements, requiring trains to traverse at reduced speeds, impacting the service and journey time for passengers. The works involved installing precast piled foundations deep into the ground and replacing outdated headspan-based support systems with an adjustable portal conversion design. The project also involved an extensive programme of holding works, including ground investigations, slope and track monitoring, and design development.

Each step in the process is subject to a quality inspection, requiring sign-off prior to the next one starting. Traditionally, contractors accumulate large volumes of paperwork documenting these processes.

Vinny O'Halloran, operations director from ARQ said: "The platform is the perfect solution for our one-team

approach and our focus on implementing multi-faceted projects right first time. Our entire team were able to use eviFile, whether on-site with the mobile app or using the web interface in the head office, replacing time-consuming paperwork. The software provided real-time exchange of information, giving complete visibility of the status of every single element of the project. It also tracked progressive assurance, leading to a snag-free construction hand back on project completion.”

Every stage of the process is stored within the eviFile platform, from initial design, scheduling, and construction, through to completion and handover, ensuring efficiency throughout the project lifecycle.

Luke Allen, eviFile’s managing director, explained: “ARQ was able to easily document all installation and commissioning information requirements, while gaining real-time progress insights. Efficiencies gained helped to demonstrate value for money on these essential works to keep the embankment safe and provided the necessary project assurance data required by Network Rail.”