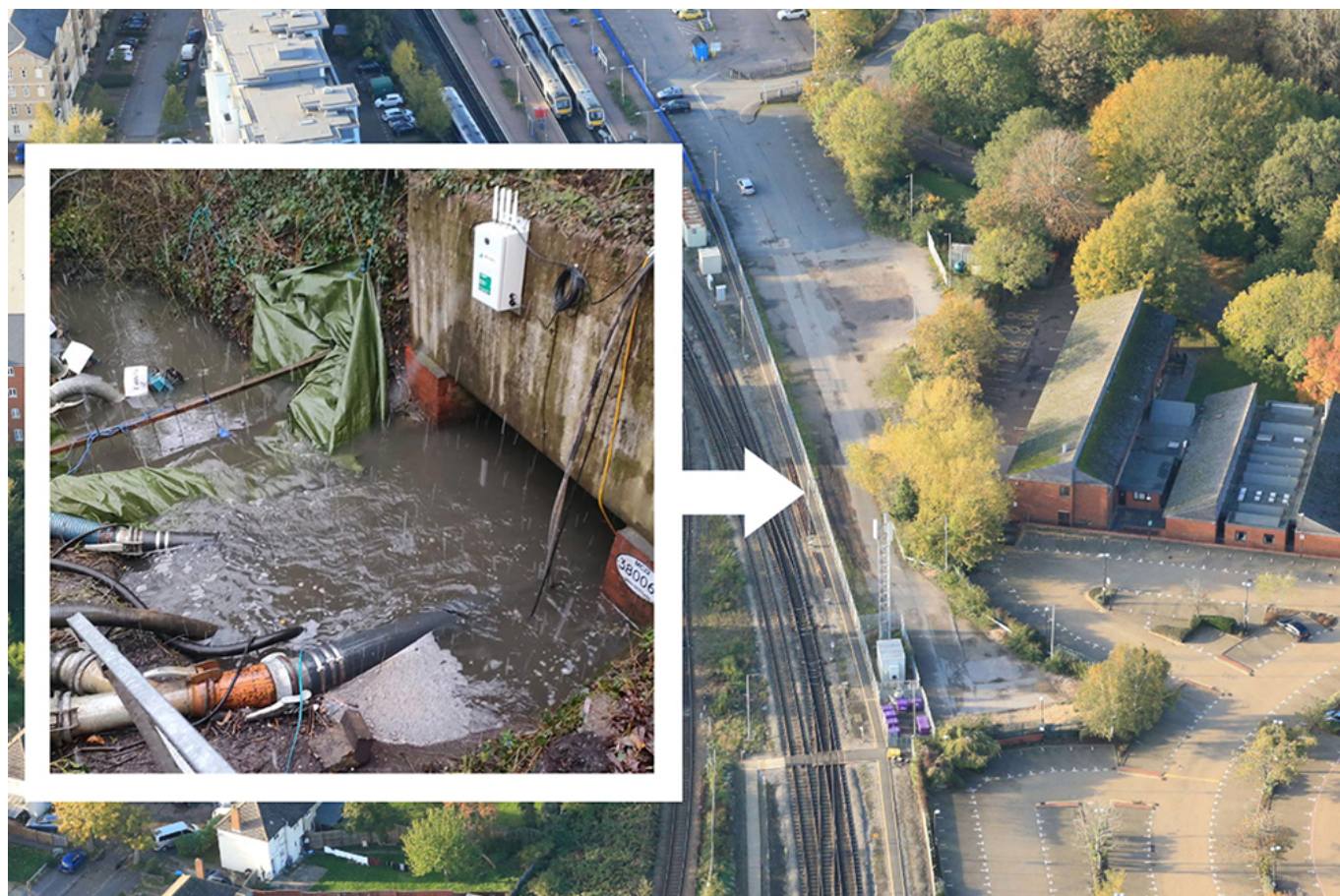


Flood damage stops trains between Aylesbury and Princes Risborough

March 13, 2023



Network Rail engineers are carrying out emergency repairs to a damaged culvert which takes a waterway under tracks to the south of Aylesbury station.

Chiltern Railways passengers are being advised to plan their journeys between Aylesbury and Princes Risborough stations after flooding underneath the railway.

Heavy rain over the last few days has caused water levels to surge in the Victorian, brick-built structure, making it difficult to monitor ongoing repairs inside.

Because of this all trains between Aylesbury and Princes Risborough stations are currently suspended.

Engineers are working around the clock to make the railway safe and reopen it for passengers and freight services as soon as possible.

The team is also working closely with the Canal and River Trust and Environment Agency to control the flow of water which is being discharged into the California Brook from the nearby Grand Union Canal basin.

While the railway remains closed Chiltern Railways will operate an hourly bus replacement service between Aylesbury, Little Kimble, Monks Risborough and Princes Risborough stations to keep passengers on the move.

People are being urged to check www.nationalrail.co.uk in advance and allow extra time for their journeys.

Adam Checkley, infrastructure director for Network Rail's Central route, said: "We're really sorry to passengers affected by the closure of the railway between Aylesbury and Princes Risborough while we complete a vital safety assessment and repair of a culvert beneath the tracks.

"The safety of passengers and staff is our number one priority and we're working hard to reopen the railway as soon as possible. In the meantime, I'd urge passengers to check www.nationalrail.co.uk and with Chiltern Railways for the latest travel advice."

Jacqueline Dey, operations director for Chiltern Railways, said: "Chiltern Railways is providing rail replacement buses to keep our customers moving between the affected stations. We apologise to those who will be impacted by the suspension of our services, and thank our colleagues at Network Rail who are working flat out to get the route open as soon as it's safe to do so."

Passengers are advised to check before they travel at www.nationalrail.co.uk for updates and details of alternative travel arrangements that are in place.

Photo credit: Network Rail