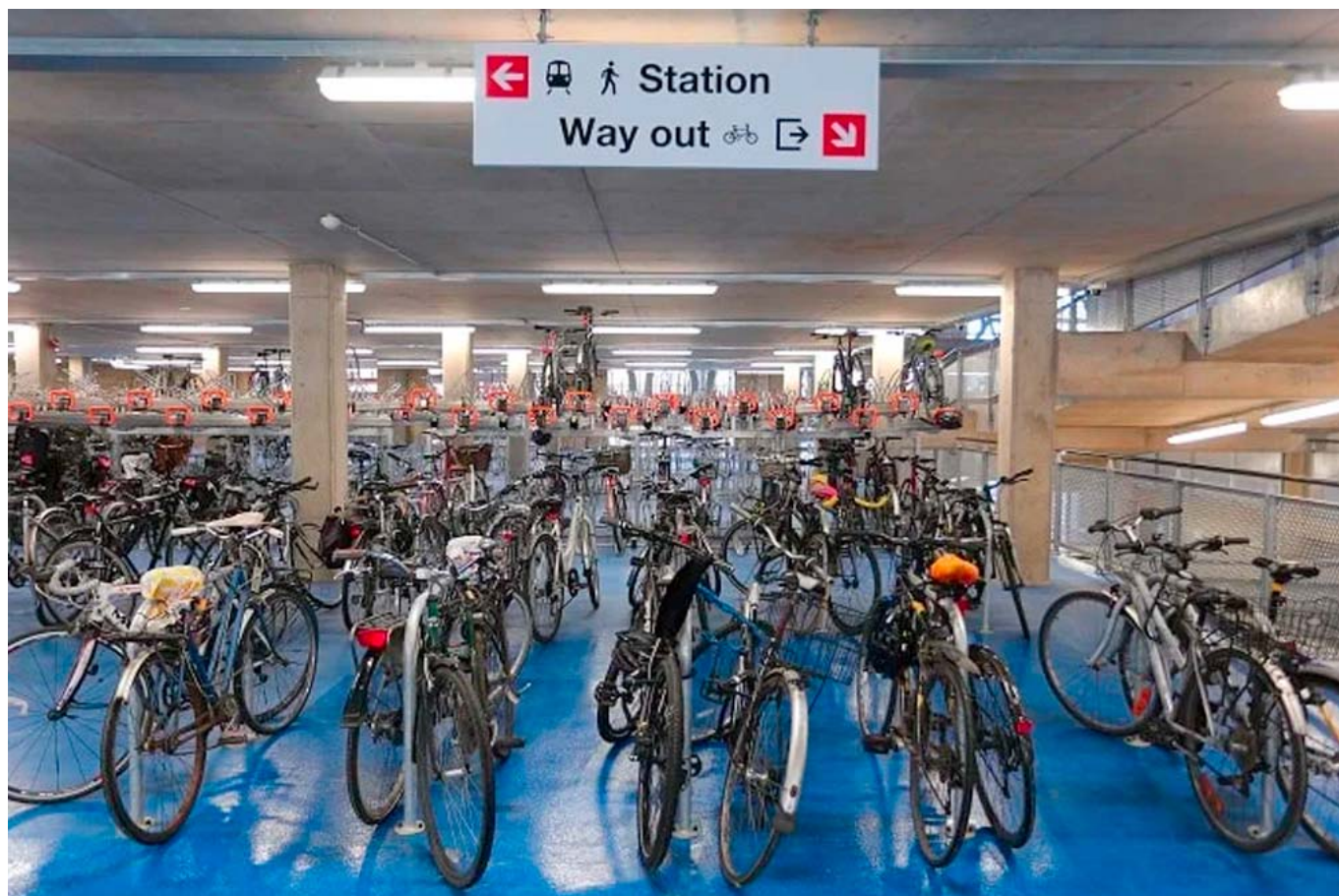


# Funding announced for major changes to Cambridge station cycling facilities

January 26, 2022



Greater Anglia has said it welcomes funding that will be used to deliver £500,000 worth of improvements to Cambridge station's Cycle Point bicycle parking facility.

The changes will include better CCTV, secure access compounds and upgraded accessibility. The work will be part of a partnership project to upgrade the cycle parking arrangements at the station.

Sustrans in partnership with Brookgate, Cambridge City Council and the Greater Cambridge Partnership (GCP) have awarded a £530K grant to improve security, signage and accessibility at the facility.

With the money secured, Greater Anglia will develop a programme of improvements in consultation with the Cambridge Cycle Point task group – a sub-group of the Cambridge Cycle Crime Prevention Group – to improve customer experience and satisfaction, including security and convenience, at the Cycle Point facility.

The improvements will include:

- CCTV upgrade, linking it to Greater Anglia's new system which records much higher definition images, is more reliable and allows for remote viewing. Phase two of the CCTV upgrade will see the cameras linked to the Cambridge City public camera network that can be monitored by Cambridgeshire Constabulary and other police networks;
- modifying the Cycle Point's current 24-hour open access arrangement to help reduce cycle theft. Greater Anglia will explore the opportunity to install access controls in consultation with Cycle Point customers;
- the installation of a speaker system to provide security announcements and warnings to would-be thieves or vandals;
- improvements to signage to help customers find their way around the facility and find and use the secure cycle parking;
- and accessibility improvements for those using cargo bikes, tricycles or adapted bikes, as well as those with disabilities, carrying small children in bike seats or who do not have the strength to push bikes up a slope or cannot use the ramps. This will include increasing the number of accessible spaces on the ground floor and ensuring adequate directional signage to this area.

Simone Bailey, Greater Anglia director of asset management, said: "We're delighted to have received this funding to improve security and accessibility at Cycle Point.

"We take our customers' security very seriously and have worked closely with our partners to identify the necessary enhancements which will help to increase customer and stakeholder confidence in the facility."

Cllr Elisa Meschini, chair of the Greater Cambridge Partnership's executive board, said: "These upgrades will not only help to provide greater security at Cycle Point, but they will help to encourage more people to travel more sustainably by bike and public transport to help improve congestion on our roads and the quality of the air we breathe."

Cllr Katie Thornburrow, executive councillor for Planning Policy and Transport, Cambridge City Council, said, "This is excellent news for everyone using the rail station and will do a lot to encourage cycling in Cambridge, which is a priority for the City Council. There has already been significant work to make cycling a first choice for active travel at the station and elsewhere in the City, and this additional government funding will make a big difference. We look forward to working with Greater Anglia and other partners to deliver more secure and accessible cycle parking, making the best possible use of this very welcome investment."

Police and crime commissioner, Darryl Preston added: "This is welcome news for people living and working in Cambridge. I set out my commitment to listening and acting on the concerns of local people in my Police and Crime Plan and one of the issues regularly highlighted was cycle crime. Today's announcement is the result of some excellent partnership work and the dedicated resources this funding will bring should help reassure local people that their concerns about security are being addressed."

Mayor of Cambridgeshire & Peterborough, Dr Nik Johnson, said: "This is very good news. Investing in safer cycling routes and more secure bike parking is an important way to help people feel confident about pedalling to public transport hubs, where they can jump on a train or a bus, instead of using the car.

“Cambridge has always been celebrated as a cycling city and we need to make it easier for more people to leave the car behind. We must invest more in active travel, whether cycling or walking, and link it into good public transport.

“It’s better in every way – for health, for air quality and for pushing back against climate change.”