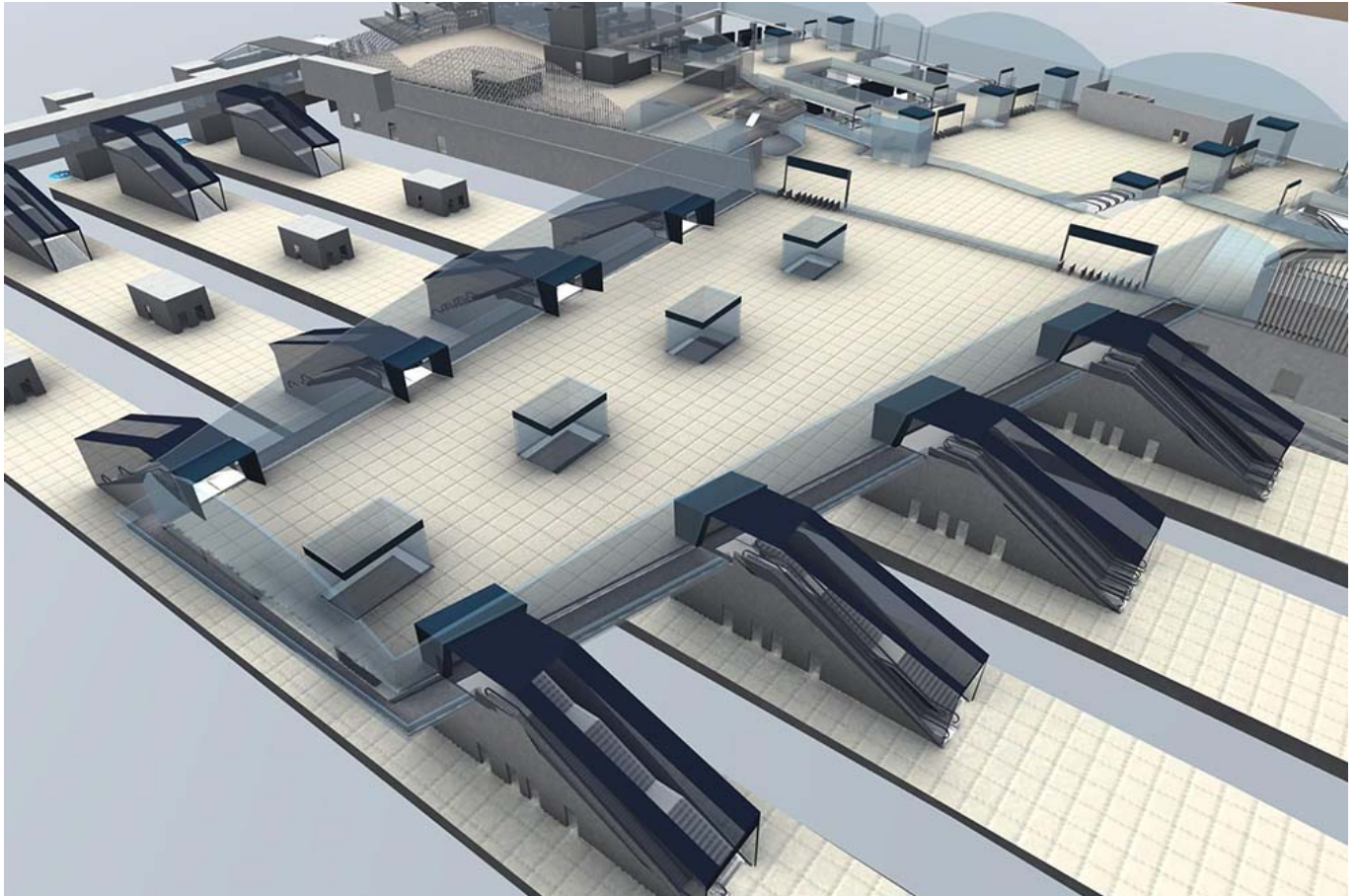


# HS2 confirms lifts and escalators framework award

January 17, 2022



HS2 has appointed TK Elevator to the framework to deliver 300 leading-edge lifts and escalators for four new station facilities being built as part of the high-speed rail project.

Birmingham Curzon Street, Interchange, Old Oak Common and new HS2 platforms at London Euston will need over 160 lifts and 130 escalators to help people access HS2 trains every day.

TK Elevator employs about 400 people across the UK, and the final contract value is expected to be between £207 million and £316 million depending on the numbers of lifts and escalators required.

HS2 minister Andrew Stephenson said: "HS2 is a revolutionary project that will improve transport, slash carbon emissions and create long-lasting jobs across the UK from manufacturing to the running of trains and it's only right that it is accessible for everyone.

"These state-of-the-art lifts and escalators, alongside our commitment to step-free access from street to the train, will facilitate this while also acting as an eye-catching feature."

A flexible approach allows HS2 to vary the number of lifts and escalators in line with station requirements as the designs are finalised. The framework also includes maintenance for up to 20 years as well as manufacture and installation.

All the new stations in London and Birmingham will be 'zero carbon' in terms of day-to-day operation, and fully accessible, with step-free access from street to train. Placed end to end, the escalators would stretch more than 3km – longer than the Forth Rail Bridge.

They will also be built to the 'BREEAM Excellent' standard in terms of sustainable lifetime performance, with Interchange set to achieve the higher level of 'BREEAM Outstanding'. Energy efficient lifts and escalators are a key part to securing these environmental standards.

The longest escalators will be at Old Oak Common, in west London. They will take passengers 13.5m up from the subsurface platforms to concourse level. Overall, the new station – where HS2 meets Crossrail services to Heathrow and the West End of London – will have over 50 lifts and escalators.

HS2 Ltd's procurement director, Andrew Cubitt, said: "These lifts and escalators will be an essential part of our four iconic new stations – moving hundreds of thousands of people every day and helping us to ensure seamless journeys for everyone.

"I'd like to congratulate TK Elevator on their award of the framework and I look forward to seeing them deliver a vital part of the HS2 project."

Inge Delobelle, CEO of TK Elevator in Europe & Africa, said: "We are honoured to partner with HS2 on this landmark project. We have a strong track record of supporting transport infrastructure projects across the world, and are confident that our proven expertise as well as our commitment to sustainability and high safety standards will help provide the best mobility solutions for this ambitious undertaking."

*Image credit: HS2*