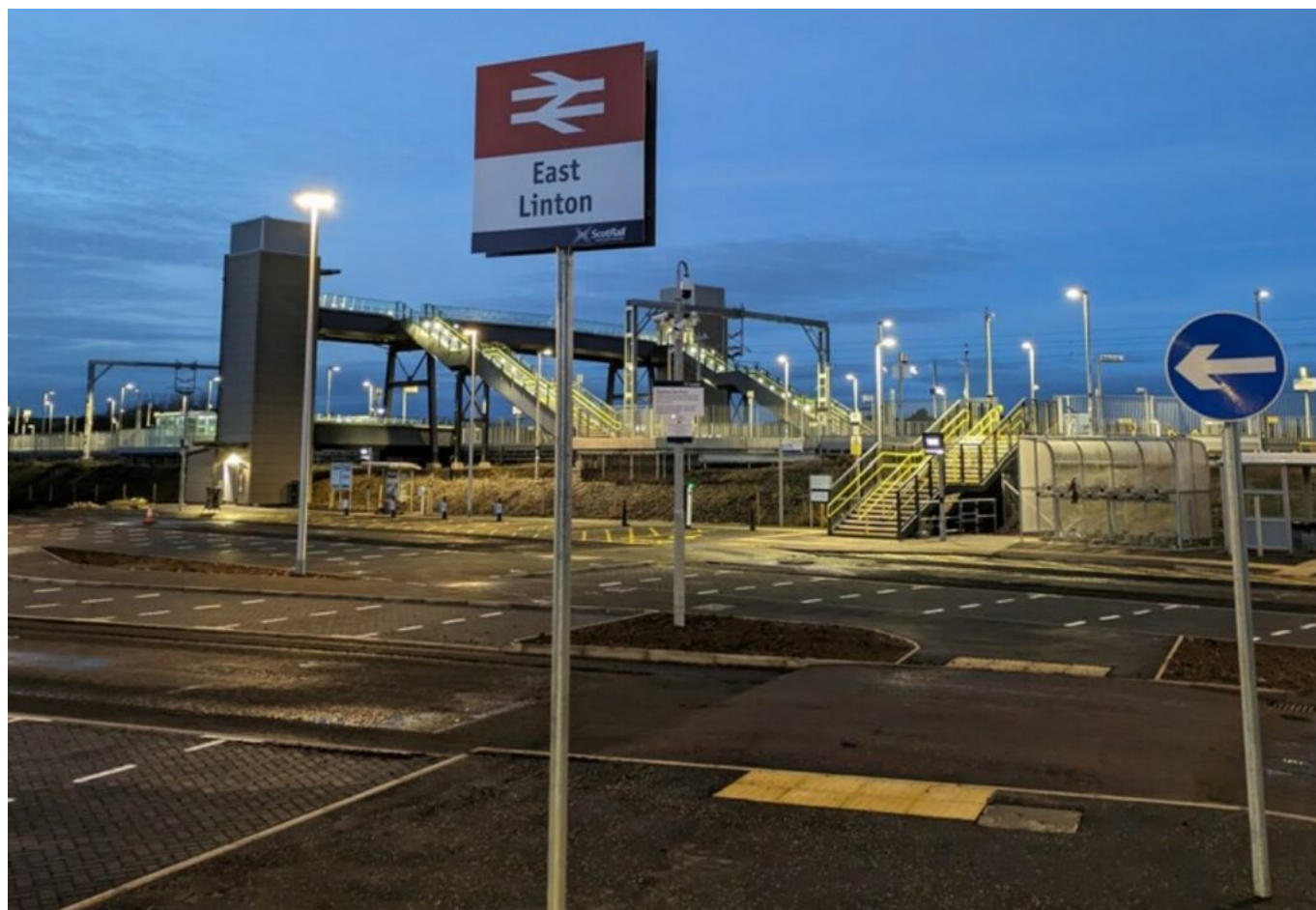


## In The News | 20th November 2023 | Latest Rail News

November 20, 2023



Click here to listen to the latest rail news on Monday, 20th November 2023

---

InTheNews: The latest rail news on Monday, 20th November 2023

---

HS2 Ltd is targeting a 2030 completion date for the new high-speed rail line between west London and Birmingham, MPs have been told.

An article on Building Design website says the company's executive chairman Sir Jon Thompson revealed the internal target while giving evidence to a recall session of the public accounts committee.

Thompson was initially tight-lipped on the exact completion date, saying that they were “well within” the 2029 to 2033 range that government ministers have publicly committed to.

But later in the hearing, he said HS2 Ltd “have a month that we are trying to aim for in 2030”.

---

New trains for the Piccadilly line are undergoing testing on tracks and in a climate chamber in Austria and Germany.

An article on the BBC website says the engines are due to arrive in London in summer 2024 for more tests before entering service in 2025.

Carriages have been subjected to a range of temperatures and wind conditions to make sure they will be able to run in all weather conditions.

The locomotives are lighter than existing designs, making the ride smoother and more energy efficient.

[Click here for more details.](#)

---

Network Rail has completed the construction of East Linton station.

An article on the Border Telegraph website says the new £15 million facility is undergoing the final stages of testing and commissioning – with rail services set to call from Wednesday, 13 December 2023.

Sitting on the East Coast Main Line, the new station has two platforms, 114 car parking spaces, including blue badge priority parking, and 18 electric vehicle charging points.

---

Four options for a “rail” service between the Fenland towns of Wisbech and March are being considered by Network Rail.

An article on the BBC website says campaigners have been calling for the Bramley Line to be re-opened for decades, after it shut in the 1960s.

The Cambridgeshire and Peterborough Combined Authority has asked Network Rail to look at all options.

Among the considerations are trams and light rail as a way to connect the towns.

*Photo credit: Network Rail*