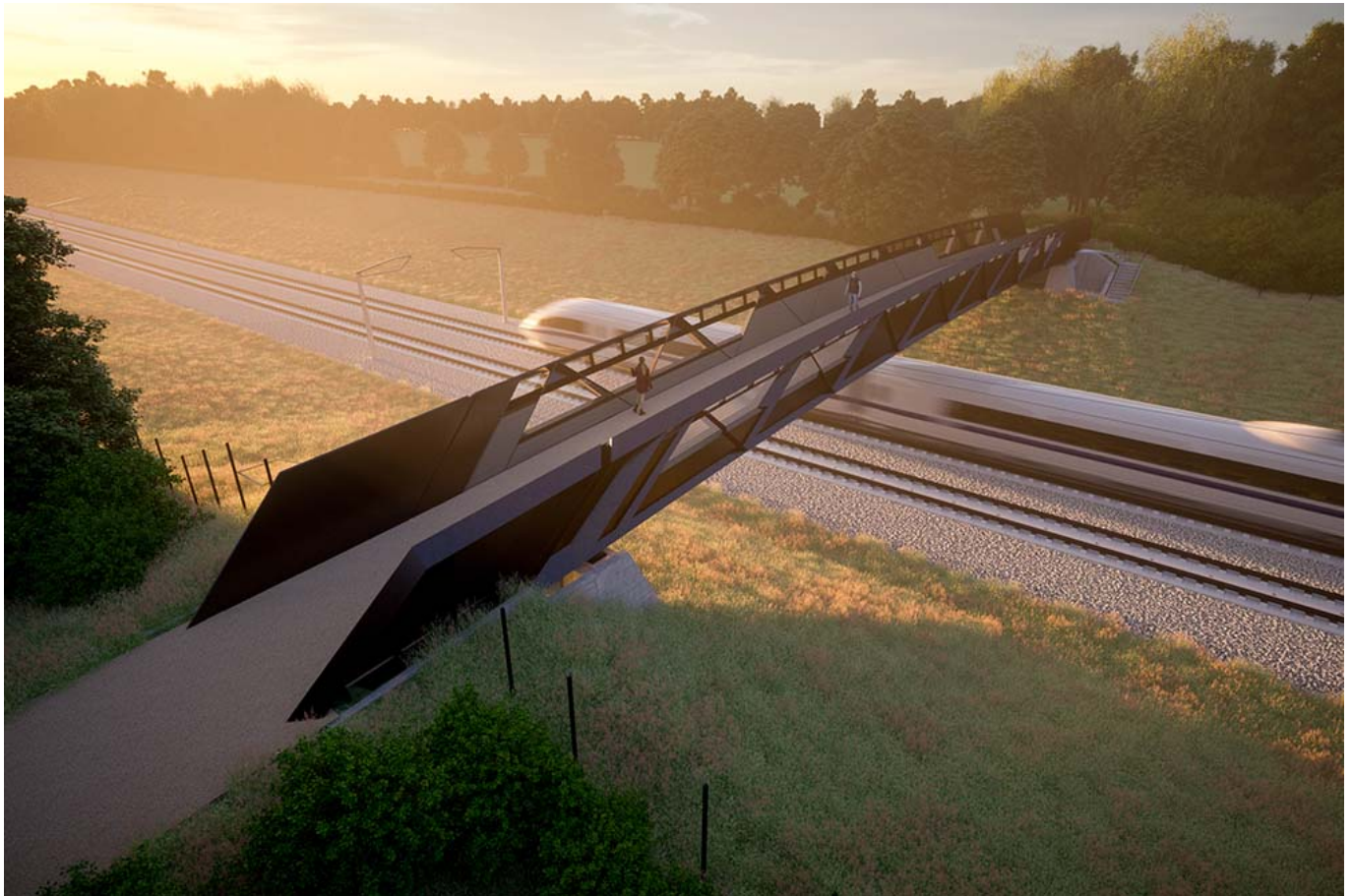


In The News | 21st July 2022 | Latest Rail News

July 21, 2022



Click [here](#) to listen to the latest rail news on Thursday, 21st July 2022

InTheNews: The latest rail news on Thursday, 21st July 2022

Network Rail has launched a new taskforce led by independent experts to investigate and make recommendations on how the railway can develop its approach to resilience during hot weather following this week's unprecedented heatwave.

The review will consider four key areas, each led by an independent expert in their field. Three of these areas will be focused on gathering insights from other countries and making comparisons with international rail networks that are more used to dealing with extreme heat and fluctuations in temperature.

Andrew Haines, chief executive of Network Rail, said: “The weather we’ve experienced this week has put a huge amount of pressure on our infrastructure, our staff and our passengers, and with extreme weather events becoming more frequent as our climate continues to change, we’ve got to pull out all the stops to make our railway as resilient as possible.”

[Click here for more details.](#)

ScotRail has reintroduced its full timetable after months of reduced services caused by a dispute over pay for drivers.

The article on the Barrhead News said the recently nationalised rail operator cut hundreds of services in May amid a staff shortage and drivers refusing to work on rest days.

Following negotiations, members of the union Aslef agreed to accept ScotRail’s improved pay offer last week.

A heritage railway line is being squeezed by rising coal prices and the cost of living crisis, its volunteers have warned.

An article on the BBC website says Swanage Railway said a drop in coal supplies from Russia and Ukraine meant it was forced to increase fares.

The attraction is also recovering from the effects of falling visitor numbers during the pandemic.

As well as adding a fuel surcharge, the railway said it would diversify its retail and catering provision.

HS2 has revealed the first images of the bridges that will carry rural footpaths and bridleways across the new high speed railway as it passes through Buckinghamshire, Oxfordshire and West Northants.

Made of weathering steel, the sides of the lightweight bridges will lean outwards to maximise views of the sky and improve the experience of people crossing the railway.

Weathering steel – which ages naturally to a russet brown colour – was chosen to help match the tone of the surrounding countryside, while the plates that form the structure of the bridges will be angled to appear narrower and lighter.

[Click here for more details.](#)

Photo credit: HS2 Ltd