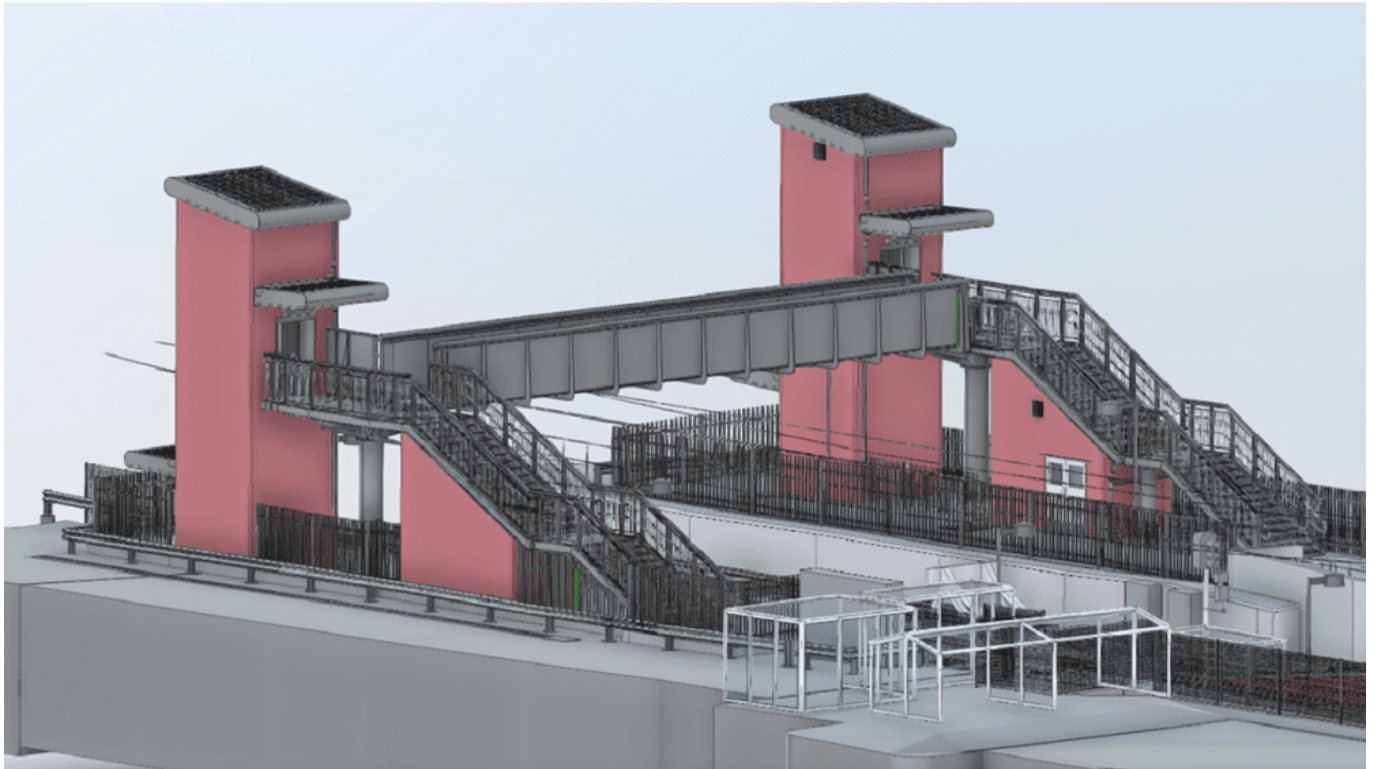


# In The News | 22nd November 2022 | Latest Rail News

November 22, 2022



Click here to listen to the latest rail news on Tuesday, 22nd November 2022

---

InTheNews: The latest rail news on Tuesday, 22nd November 2022

---

Rail commuters could be facing more travel chaos in the weeks leading up to Christmas, after a fortnight of talks between a rail union and operating firms broke down.

An article in City A.M. says the RMT said negotiations to avert industrial action with the Rail Delivery Group, which represents train firms, collapsed on Monday, and that there was “the hand of the Tory government” involved.

Its general secretary confirmed that union bosses would meet on Tuesday to consider “further phases of sustained industrial action”.

A spokesperson for the Rail Delivery Group says: “We urge the RMT leadership to stay at the negotiating table so we can build on that progress and end a dispute that is harming passengers and businesses, the industry, and their members.”

---

Northern Trains is launching a £250,000 cash scheme to enhance accessibility and improve train travel for all.

The Northern Accessibility Innovation Scheme, is dedicated to opening opportunities for disabled and older people on the Northern network and Northern is seeking proposals from organisations, stakeholders, community groups and charities on specific projects that will make a positive difference to communities across the north of England.

---

A huge investment to bring lifts to Royston station and make it more accessible for passengers is now under way.

Over the coming months, Network Rail will build a new footbridge to provide Thameslink and Great Northern passengers with a quick and easy way to switch platforms.

Jonny Ham, lead portfolio manager for Network Rail, said: “It’s great to see the new bridge finally starting the construction phase. Making the station more accessible will make a huge difference for thousands of passengers and help more people to travel by train with confidence.”

[Click here for more details.](#)

---

Six months on from the opening of the Elizabeth line, business groups and small businesses in and around the new stations are hailing its transformative effect.

Nearly 70 million journeys have been made on the new railway line since its official launch in May, with half of these made in the central section between Paddington and Woolwich.

The Mayor of London, Sadiq Khan, said: “Delivering the transformational Elizabeth line has provided a massive boost to London’s businesses this year, crucial after the pandemic. This is helping us to continue building a better London for everyone – a city that is fairer, greener and more prosperous for all.”

[Click here for more details.](#)

*Photo credit: Network Rail*