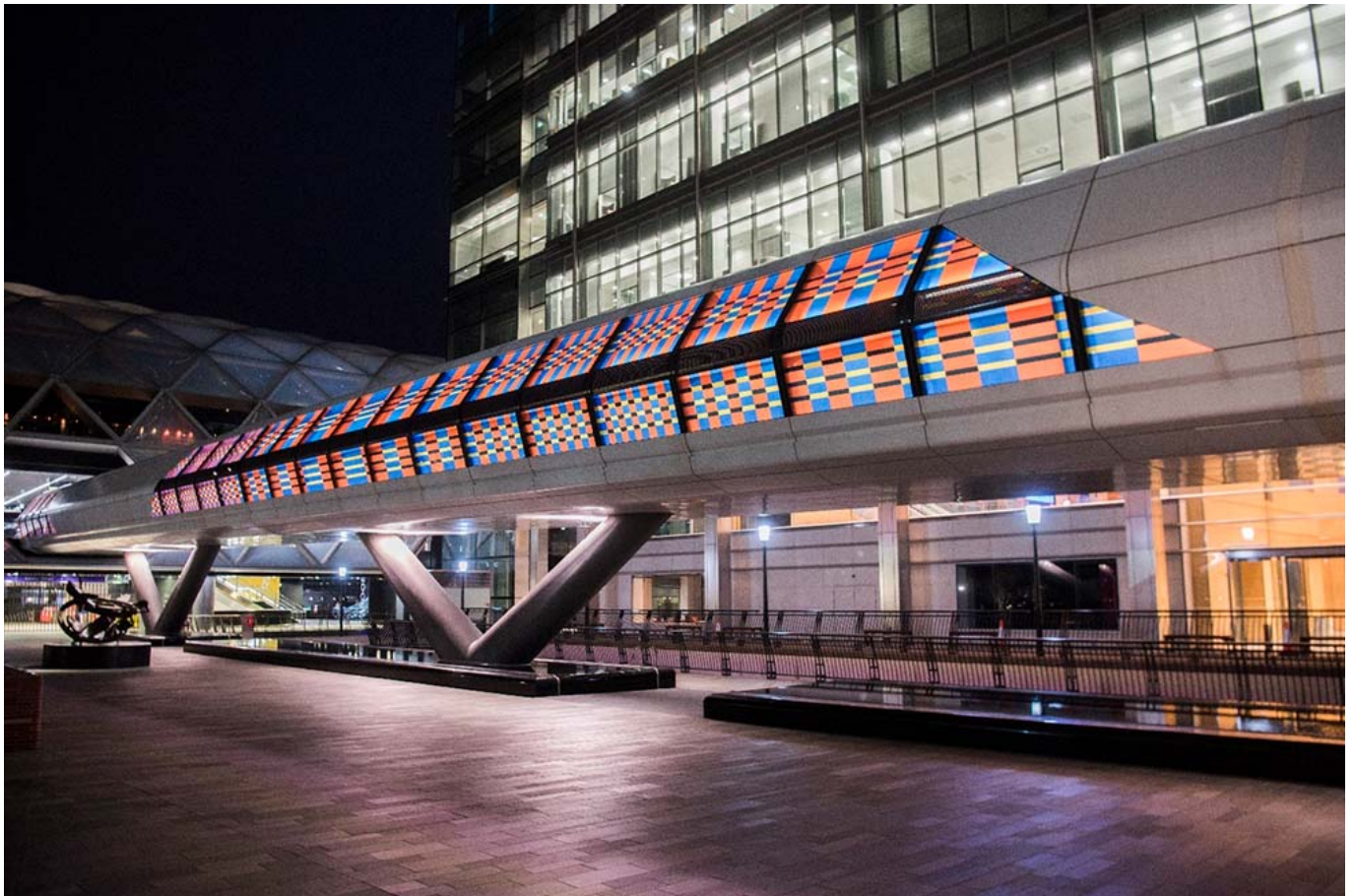


In The News | 26th January 2022 | Latest Rail News

January 26, 2022



Click here to listen to the latest rail news on Wednesday, 26th January 2022

InTheNews: The latest rail news on Wednesday, 26th January 2022

Lord McLoughlin has been appointed Chair of Transport for the North (TfN), taking up his new post today.

He has had an extensive career in UK politics for more than 30 years, including four years as Secretary of State for Transport.

He said: "A key focus for the TfN Board remains the need to press the case as to why its preferred

approach to Northern Powerhouse Rail remains fundamental to securing the long-term economic future of the North.”

[Click here for more details.](#)

The penultimate Elizabeth line station has now been transferred to Transport for London (TfL).

Canary Wharf has passed from Crossrail to the transport body so it can be integrated into the operational network before the Elizabeth line opens in the first half of this year.

It is the ninth out of ten stations to go through this process.

[Click here for more details.](#)

The Metro extension in Dudley has reached a major milestone, with the first pieces of track being delivered for the project.

Overall, 300 metres of rail arrived at the Castle Hill site, in Dudley town centre, on Monday in preparation for installation work, due in the coming weeks.

The light rail project is the biggest of its kind in the UK.

[Click here for more details.](#)

An injured swan had to be rescued after it made its way on to the tracks at a station in west London causing hours of delays.

The article features on the ITV website saying the swan blocked two trains on the tracks at South Acton station.

Network Rail said response staff arrived on site to safely remove the swan, who is now in the care of the London Wildlife Protection.

Photo credit: Camille Walala and Canary Wharf Group