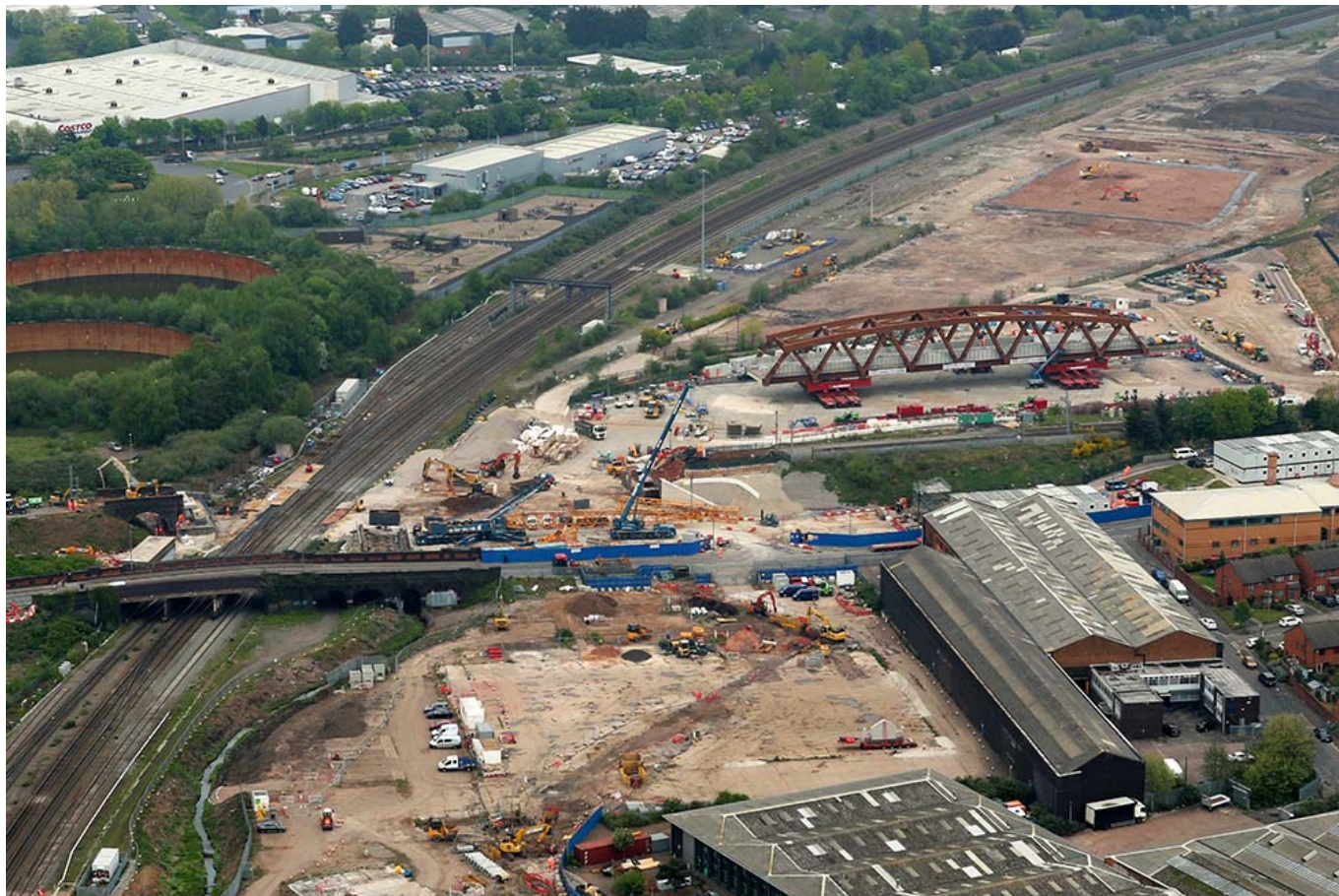


In The News | 6th May 2022 | Latest Rail News

May 6, 2022



Click [here](#) to listen to the latest rail news on Friday, 6th May 2022

IN THE NEWS
BROUGHT TO YOU BY

UK
Power
Networks
Services
The power to deliver a better future

FIND OUT MORE

Delivering a bright energy
future **for high speed rail**

InTheNews: The latest rail news on Friday, 6th May 2022

Two members of ScotRail staff have been praised for their actions and intervention when another railway worker collapsed at a Fife station.

Loran Bathgate initially began to give CPR compressions and Charlie Algeo retrieved the station's Automated External Defibrillator.

The pair then continued to give CPR compressions, with assistance from members of the public, until paramedics arrived.

Thankfully, the person was breathing again when the paramedics arrived – just 20 minutes after first collapsing – and is now recovering well with no signs of permanent damage.

[Click here for more details.](#)

Railway users could soon enough see the price of their tickets soar as a result of inflation spiking to 7 per cent and not showing any sign of easing.

An article on City A.M. said economists argued fares could go up as high as 12 per cent from next year if the government doesn't untie the increase in inflation rates and rail prices, as July's retail price index is normally used to calculate the increase in rail fares for the coming year, the Telegraph reported.

According to Capital Economics' Paul Dales, the retail price index (RPI) will go up 11.8 per cent this summer, prompting a £529 surge for a London to Brighton seasonal ticket.

The warning comes on the same day the Bank of England said it will continue to hike interest rates to chase the highest inflation rates in over 40 years.

Two direct trains per hour will once again run between Weymouth and London Waterloo, following the introduction of South Western Railway's (SWR) new timetable on Sunday 15th May.

The article on the Greatest Hits Radio website says that since the onset of the COVID-19 pandemic one train per hour has run on the route to reflect the reduced number of people travelling by rail, but SWR will now reintroduce a second train to strengthen service levels.

Final preparations are underway to install a new landmark railway bridge in Birmingham which will become the longest single-span railway structure in the West Midlands.

The 92-metre-long bridge in Stechford is being built by Network Rail in partnership with HS2 so future tracks for Britain's new zero-carbon railway can pass underneath it.

This coming weekend 18 Self Propelled Modular Transporters will drive the new 2,600 tonne metal and concrete bridge into place before tracks are re-laid so trains can run again on Monday 23 May.

Photo credit: Network Rail Air Operations