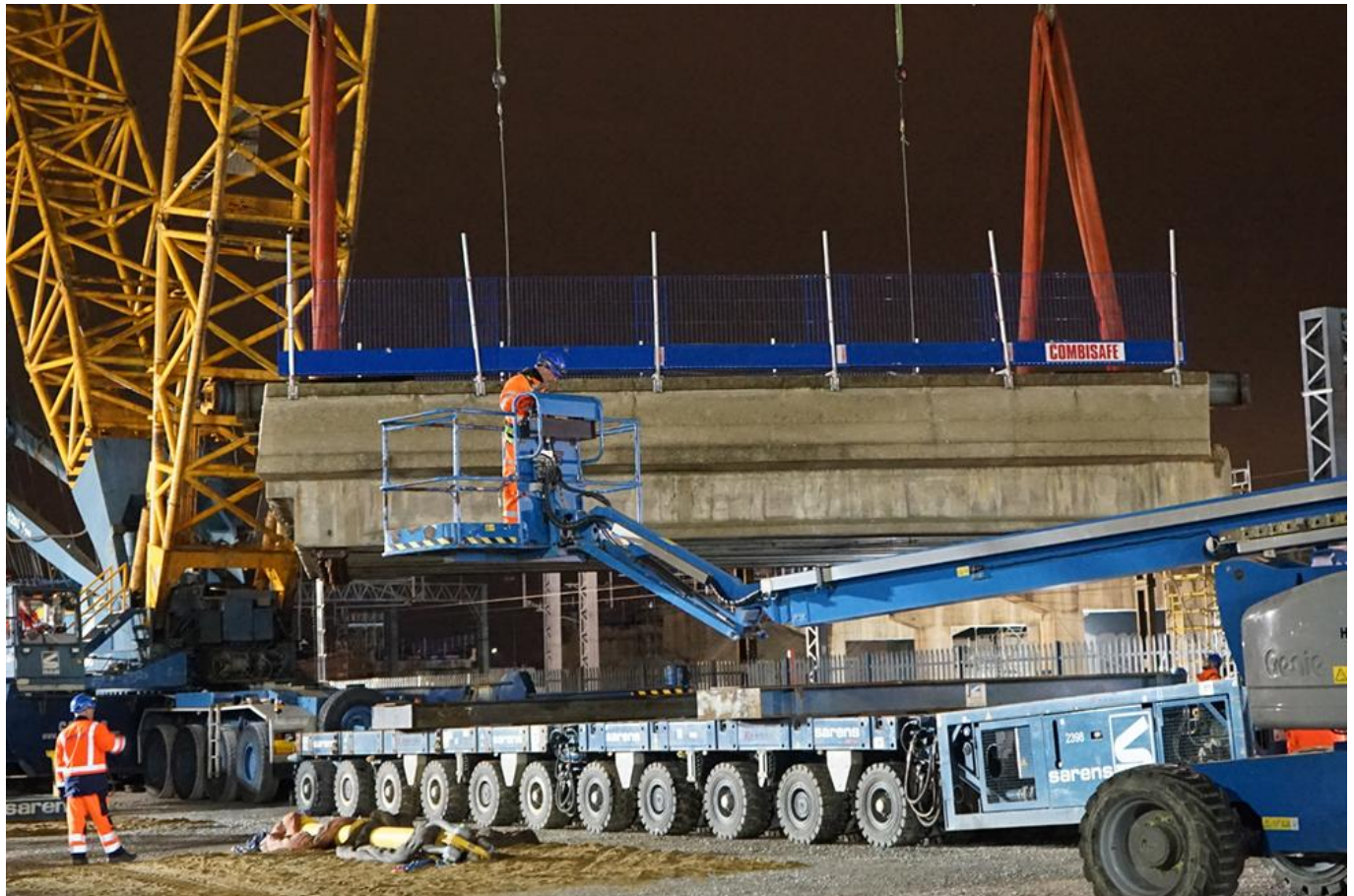


# Key rail upgrades completed on West Coast main line over August bank holiday

September 1, 2020



Network Rail has completed a range of essential upgrades to the West Coast main line over the August bank holiday weekend.

From Saturday 29 until Monday 31 August, teams carried out vital work on the railway which will improve both passenger and freight services on the West Coast main line – the Backbone of Britain.

The multi-million-pound investment as part of Britain's Railway Upgrade Plan saw signalling upgrades in Liverpool and multiple track upgrades requiring the full closure of the railway between Rugby and Coventry.

This work will make journeys more reliable on Europe's busiest mixed-used passenger and freight railway line.

The upgrades include:

- Signalling equipment removed from Ditton signal box in Liverpool and control moved to Manchester Rail Operating Centre.
- More work completed as part of the East West Rail project with a further span removed from Bletchley flyover.
- New track installed between Coventry and Rugby and waterproofing completed on Albany Road railway bridge in Earlsdon, Coventry.

Tim Shoveller, managing director for Network Rail's North West & Central region, said: "We know there is never a good time to close the railway and I'd like to personally thank passengers for their patience while hundreds of our engineers worked over the long weekend to make the network better for them.

"The upgrades this August bank holiday will make the West Coast main line more reliable for passengers, who we are welcoming back after the summer break as they return to school and work in the days and weeks to come. I want to reassure passengers they can travel with confidence as we work tirelessly to clean stations and implement social distancing measures as Britain emerges from the coronavirus pandemic."

Meanwhile, travellers are reminded they must continue to wear a face covering on trains and any replacement bus services. Those who fail to do so risk being fined £100.

However, some people are exempt, including young children and people with hidden disabilities or breathing difficulties.

For more information visit [www.gov.uk/coronavirus-covid-19-safer-travel-guidance-for-passengers](https://www.gov.uk/coronavirus-covid-19-safer-travel-guidance-for-passengers)

Please check [www.nationalrail.co.uk](https://www.nationalrail.co.uk) for the latest travel information.

*Photo credit: Network Rail*

---

For today's rail news from [railbusinessdaily.com](https://railbusinessdaily.com) click [here](#).