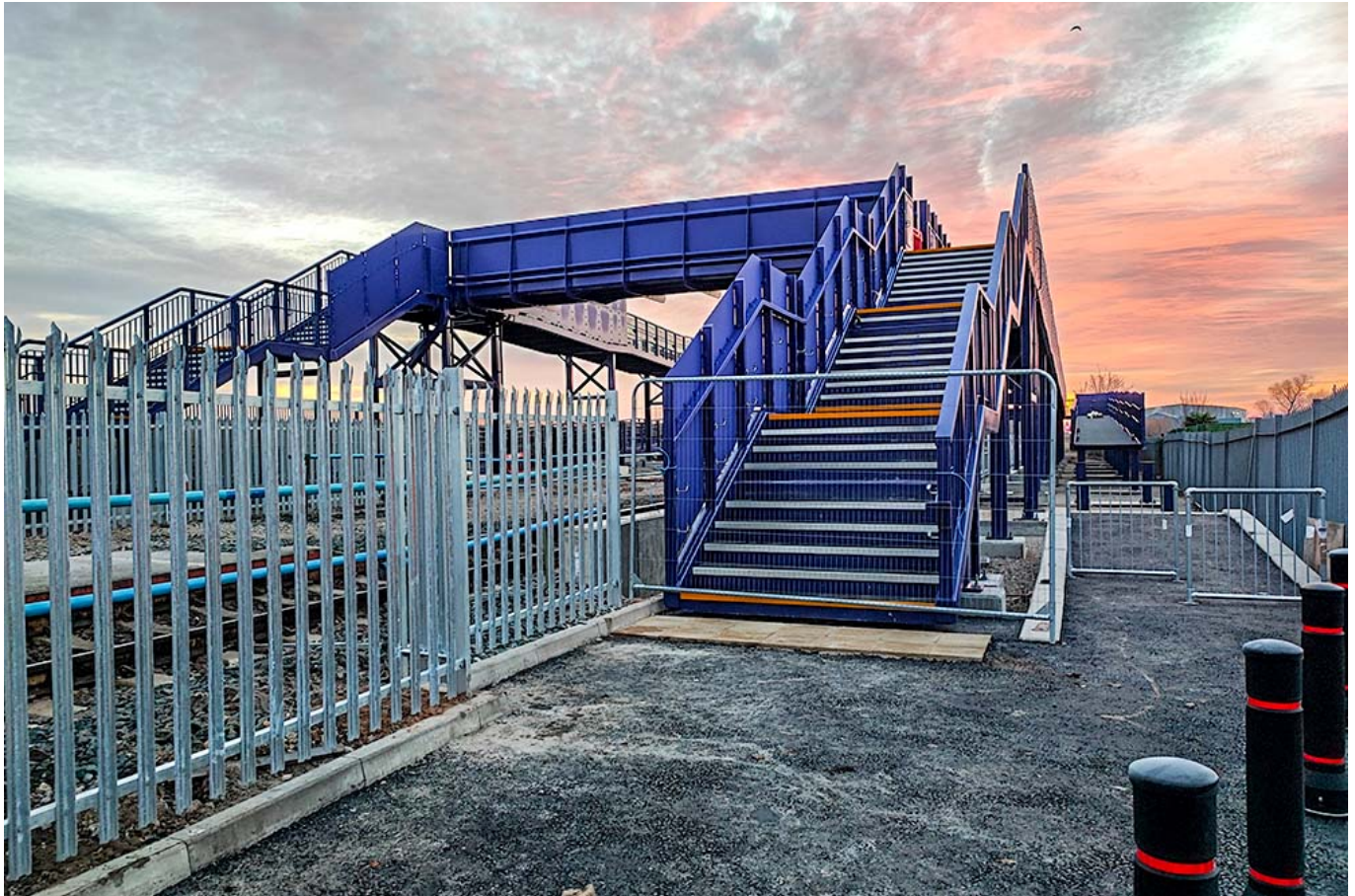


New accessible footbridge in Cleethorpes confirmed for March next year

December 22, 2021



Network Rail has confirmed a new footbridge will allow people to cross the railway to Cleethorpes seafront from March 2022.

The new accessible footbridge will allow access to the beach from Suggitt's Lane.

Work started in June after plans had been approved, with the hope of it opening in time for Christmas.

However, Network Rail said Storm Arwen and Storm Barra brought strong winds to the area, and major challenges to the final stages of the project – the last few crane lifts to put the final pieces of the bridge into place having to be cancelled due to the severe weather.

For safety reasons, this stage of work can only be done safely while the railway is closed and when key resources are available.

After careful replanning, the footbridge is now expected to open in March 2022. The final stages of the project will include the installation of lighting and CCTV, as well as work to link the bridge to the

promenade.

Matt Rice, North and East route director for Network Rail, said: “While we had planned to open the new footbridge before Christmas, unfortunately the recent harsh weather limited our progress. Despite our best efforts, we’ve had to extend the project by a few months to deliver the project safely.

“I know there are many people looking forward to using the bridge and that it’ll provide an important accessible link to the seafront. We’re working as quickly as we can to finish the final stages of the work so that the bridge is ready to open to the community in March.”

Cllr Stewart Swinburn, cabinet member for highways and transport at North East Lincolnshire Council, said: “Given the two bad storms that we have encountered in recent weeks, we completely understand the delays announced. We all look forward to this scheme coming to fruition and providing safe passage for all over the new footbridge from next Spring onwards.”