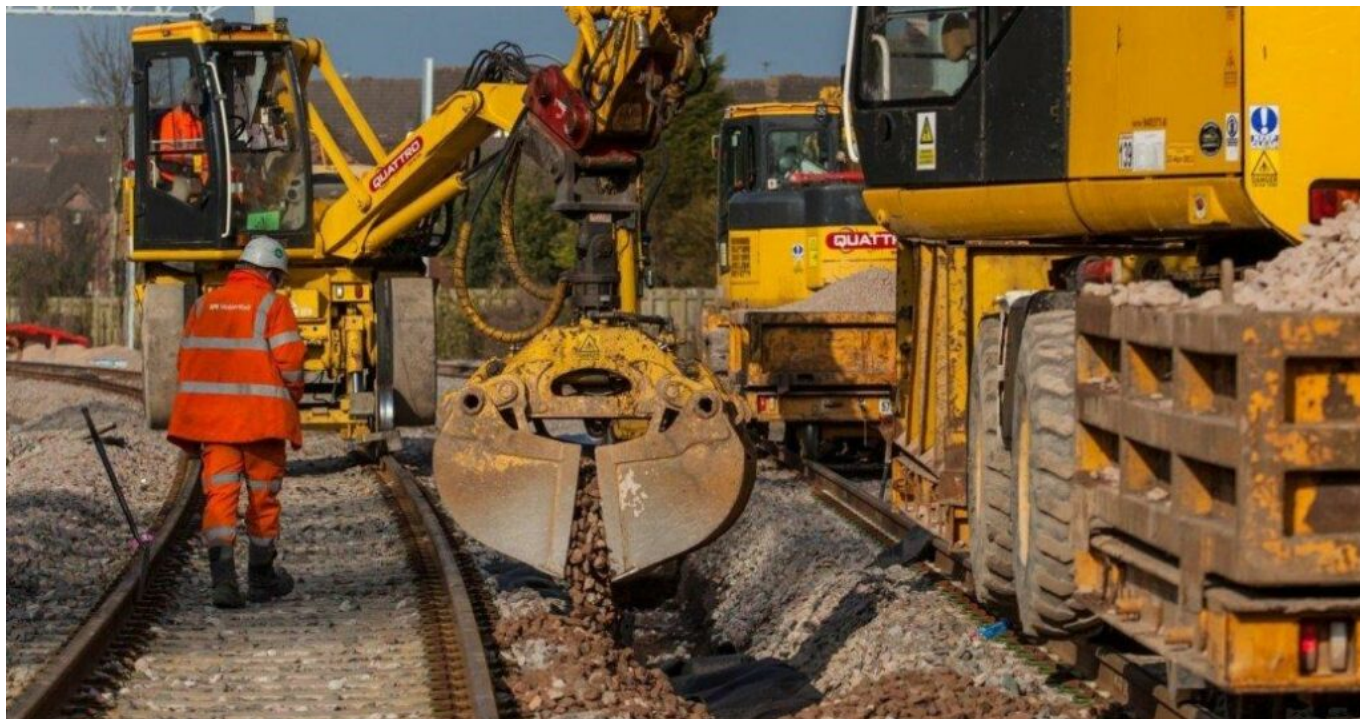


Preston to Blackpool drainage improvements to be completed in the New Year

December 4, 2018



The railway between Preston and Blackpool will be closed for seven consecutive Sundays from 6 January 2019. This means buses will replace trains between Preston and both Blackpool North and Blackpool South stations.

Passengers are advised to plan ahead and to check before travelling at www.nationalrail.co.uk.

The work is being completed as part of the multi-billion pound Great North Rail Project, which allowed the introduction of greener and quieter electric trains on Blackpool's railway earlier this year.

Network Rail engineers will be completing two major drainage upgrades in the Poulton-le-Fylde, and Kirkham & Wesham station areas, which will help to make the railway more reliable.

Work will also be carried out to fit exterior cladding panels on Kirkham & Wesham station's two new lifts. The lifts and a new footbridge were installed earlier this year as part of the station's transformation and have provided easier access to trains for passengers.

Lawrence Cheung, sponsor for Network Rail, said: "We are working closely with Northern to minimise the disruption to passengers and raise awareness of these changes to Sunday train services between Preston and Blackpool.

"The upgrade and wider investment will result in a better and more reliable railway, that will serve

passengers for many decades to come, and help boost the economy across the north of England.

“We understand that this work also affects our lineside neighbours and have written to residents who live near to where our work is taking place.

“There is never a good time to affect journeys but we have planned the work to affect the fewest number of passengers over the shortest period of time. This is essential work and I’d like to thank passengers in advance for their understanding.”

Chris Jackson, regional director at Northern, said: “The Great North Rail Project is transforming the railway across the north of England and the work on the line in early 2019 is a vital part of this.

“Thanks to the work carried out by Network Rail earlier this year, we are now able to run electric services to Blackpool from across the region, and we will continue to work closely with Network Rail to keep disruption to a minimum.

“We are working on plans to keep people on the move on Sundays and will publish these on our website as soon as possible.

“I’m sure our customers will be frustrated with more engineering work, but I’d like to thank them for their continued patience. I urge all customers to plan carefully for weekend travel to and from Blackpool in early 2018.”