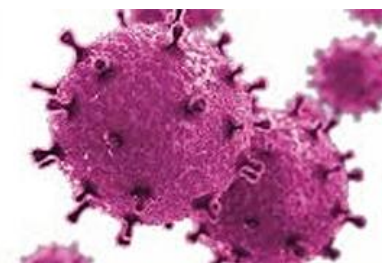


RBF charity helps railway families cope with Coronavirus

April 23, 2020

Covid-19 causing money worries?



RBF are here to support you with:

- Grants to help you pay the bills
- Access to the help you need
- Friendly and confidential advice



Get in touch: 0345 241 2885
covidsupport@railwaybenefitfund.org.uk
www.railwaybenefitfund.org.uk
Registered Charity No: 206312 & SC039950

Helping the Railway Family through tough times

Railway families struggling to cope during the coronavirus crisis have a dedicated charity to turn to. The Railway Benefit Fund (RBF) is providing extra resources to ensure help finds its way to those railway workers that need it most.

Founded in 1858, RBF is based in Crewe, Cheshire and supports current or former railway employees and their families.

During the COVID-19 outbreak the charity is providing a range of services including grants to help families pay bills; special funds to assist families with everyday needs; easy access to help and assistance programmes; and friendly and confidential advice to help families cope with many issues caused by the pandemic's impact.

RBF's new Chief Executive Claire Houghton said: "These are among the toughest times we have ever seen as a charity.

"COVID-19 has come into our lives and turned them upside down.

“Everybody has been affected in some way. Whether the virus itself has caused personal health issues in a family or its impact on business has caused financial hardship or concerns for workers – the RBF is here to help.

Pete Waterman, the charity’s President said: “Times are really tough for everybody at the moment – our rail workers are keeping Britain moving during the crisis, providing a vital service – we are here to help those who need it.”

RBF’s Chairman and Managing Director of North West and Central at Network Rail, Tim Shoveller added: “The Railway Benefit Fund takes its responsibility to support the Railway Family very seriously. We have considerably increased our grants available to provide financial help to those of you who need it.”

To help railway workers and their families, RBF has set up a dedicated COVID-19 page on its website. It contains a hotline number 0345 241 2885, a unique email address to use –covidsupport@railwaybenefitfund.org.uk – and also includes an enquiry form for anyone who prefers not to call or email. The page can be accessed [here](#).

With an App available for Apple and Android devices, a dedicated telephone hotline and website, the RBF offers a wide range of confidential charitable services which are all easy to access.

Funded entirely by donations and fundraising efforts, the RBF is solely dedicated to providing help and support to current, former and retired workers in times of need. It focuses on the modern needs and concerns of those working in the industry today, offering advice and financial support. Visit www.railwaybenefitfund.org, follow the charity on Twitter @RBF1858, Facebook @RBFCharity and LinkedIn Railway Benefit Fund. The RBF mobile App is available on the Google Play Store and Apple Store.

Photo credit: RBF