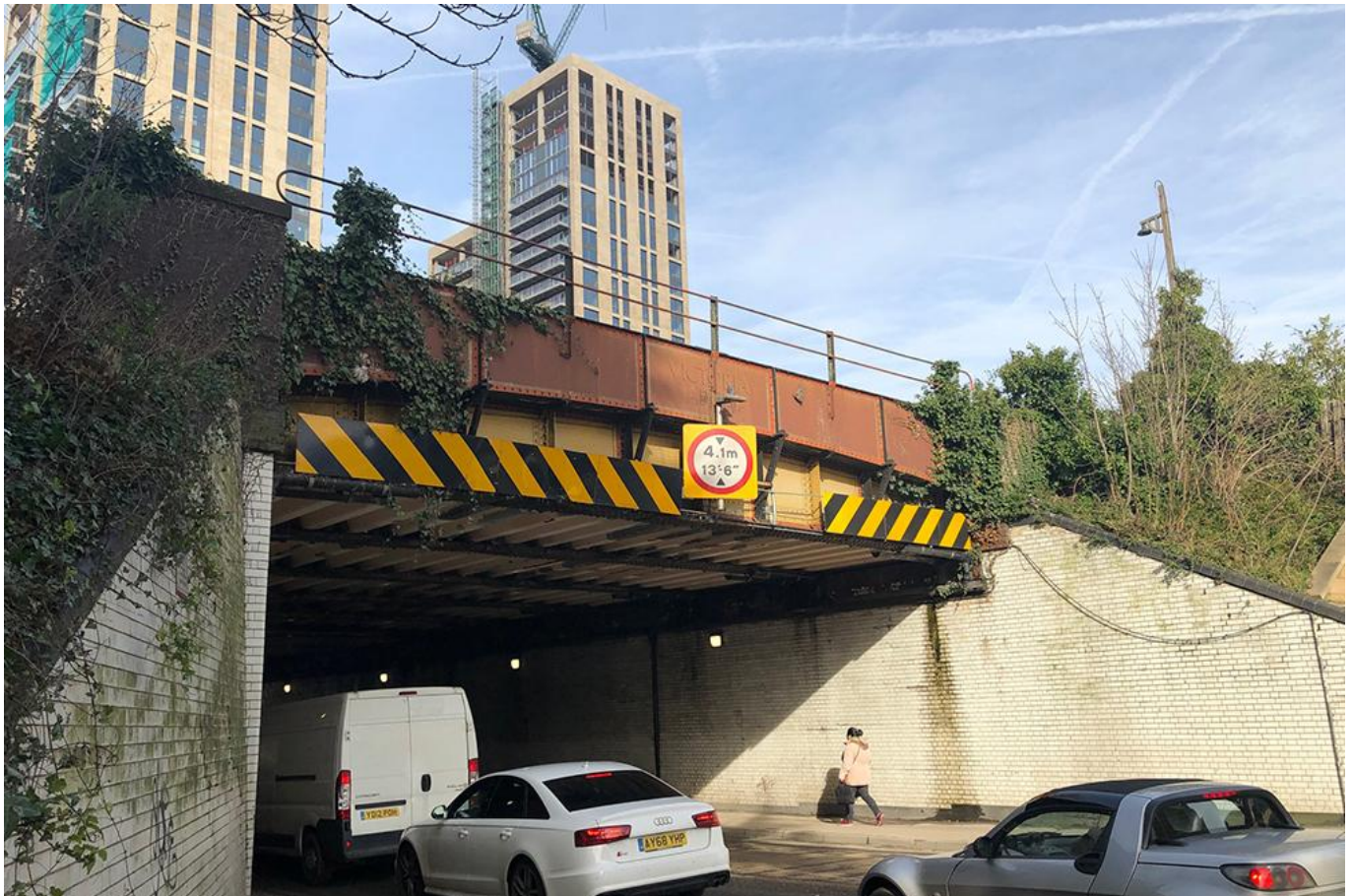


Revitalisation scheme starts to widen Victoria Arch railway bridge

October 7, 2020



The long awaited Victoria Arch Widening Scheme started its planned schedule of works in Woking Town Centre. The multi-million pound Government funded scheme will transform travel on both sides of the Victoria Arch railway bridge and support Woking's future growth and housing needs.

Working in partnership with Surrey County Council, Network Rail and Homes England, the Victoria Arch Widening Scheme will be delivered in three main phases.

- Phase one: Demolition of the Triangle site – external demolition works will start on Monday 28 September 2020.
- Phase two: Works to widen and reconfigure the highways, improve traffic flow and deliver pedestrian and cyclist improvements – scheduled to start autumn 2021.
- Phase three: Works to widen and replace the Victoria Arch railway bridge – scheduled to start beginning of 2022.

The first phase of the works, starting this week, will demolish the outdated Lynton House, Jubilee House and Southern House located within the Triangle site, and run until the end of February 2021. The Triangle

site is the pocket of land located on the south side of the Victoria Arch bridge, surrounded by Victoria Road, Station Approach and Guildford Road.

The site's working hours will follow national regulations with works permitted from Monday to Friday, 8am to 6pm; Saturdays, 8am to 1pm; Sundays and public bank holidays – no work will be allowed, except in the event of an emergency.

There will be no long-term public road closures during the phase one works. Temporary traffic management measures will be used on Victoria Road and Station Approach to allow the contractor's vehicles to gain access to and from the site during working hours.

Once complete, the new wider Victoria Arch railway bridge will:

- accommodate a two-way dual carriageway for vehicles including increased height capacity for double decker buses.
- incorporate off-road pedestrian and cycling routes underneath both sides of the new bridge.
- provide a new and improved railway bridge for Network Rail, at one of the busiest points of the railway network between London and the south coast.

To enable and enhance the new railway bridge, the scheme will also reconfigure the roads on either side of the Victoria Arch bridge. The main improvement will be the removal of the one-way traffic system (surrounding the Triangle site) and extend the two-way dual carriageway, passing underneath the Victoria Arch and along the Guildford Road.

Speaking about the scheme, Cllr David Bittleston, said: "When completed in early 2024, the scheme will significantly enhance traffic flow, reduce congestion in the area and provide safer journeys for pedestrians and cyclists.

"During the works, we recognise that there may be some disruption and we ask for your patience during this time. We are fully committed to keeping Woking Town Centre open for business and disruption to a minimum.

"As the project progresses, we will keep affected residents, businesses and commuters informed of our plans to improve the highway network around the Triangle site.

"Funded by the Government's Housing Infrastructure Fund (HIF), the project is a once in a generation opportunity to improve Woking Town Centre's transport infrastructure for all modes of transport and, ultimately, unlock existing sites for much needed housing."

To find out more about the scheme and to sign up to receive project updates, visit www.woking.gov.uk/victoriaarch

Photo credit: Woking Borough Council

For today's rail news from railbusinessdaily.com [click here](#).