

Spotlight On SigTech Rail Consultancy

January 11, 2022



SigTech Rail was formed in early 2016 by the founder Pete Lindley who is a highly qualified and well-respected Signalling Engineer. Since the company's inception the business has gone from strength to strength and become synonymous with providing safe, efficient & innovative signalling engineering excellence.

The company's specialist signalling services include non-conceptual design, installation, and permanent-way support including operational telecoms.

SigTech Rail delivers its Signalling & Telecoms expertise right across the UK and its Signalling Technicians have a proven track record of delivering safe, cost effective and quality signalling solutions.

As well as working on basic jobs its can-do engineering team can work on complex signalling engineering projects which require a multitude of signalling disciplines.



The business has been verified and audited by the Railway Industry Supplier Qualification Scheme (RISQS) and is a certified member of the Confidential Incident Reporting & Analysis Service for transport (CIRAS), Railway Industry Association (RIA), Rail Alliance, and Rail Forum Midlands.

Accreditations include ISO 9001, Construction Online (Gold), and Builders Profile. Over the last five years the team at SigTech Rail has enjoyed working with some of the UK's most demanding rail industry clients, providing them with solutions to meet the most challenging of signalling projects whilst also fulfilling the company's values:

- Safety-First – from the Managing Director, right down to the cleaner all its employees understand that everybody has a responsibility to behave in a safe manner. It challenges any unsafe working conditions, report any close calls & if necessary, stop work to reassess any safety issues.
- Teamwork – the company believes that it is stronger united, and that teamwork is an integral part of its culture. It prides itself on having built a business on trust which allows its innovative people to flourish and collaborate. Staff support & respect each other's values while being committed to honesty, trust, and transparency. Colleagues encourage diversity & regularly invest into developing teams and acquiring new talent. Accountability, focusing on goals and attention to detail are just a few more qualities which the employee's advocate to.
- Reliable – SigTech Rail believes that being a reliable and dependable rail signalling supplier is a journey, not a destination. That's why its teams work extremely hard to collectively deliver high quality working standards whilst also providing exceptional service levels. It takes pride in delivering services effectively, responsibly, and reliably.
- Conscientious – The business take pride in delivering real value to its customers, employees, partners, and the community. Staff stand by its core values when interacting with employees or working with customers and they do this authentically, constructively, and impeccably. The organisation is determined to put the interests of customers, partners, and employees first while also nurturing each of them to grow and develop. The business is about delivering loyalty, honesty, trust, accountability, and all-round value-centricity.

For more information, [click here](#), or call 01303 764344

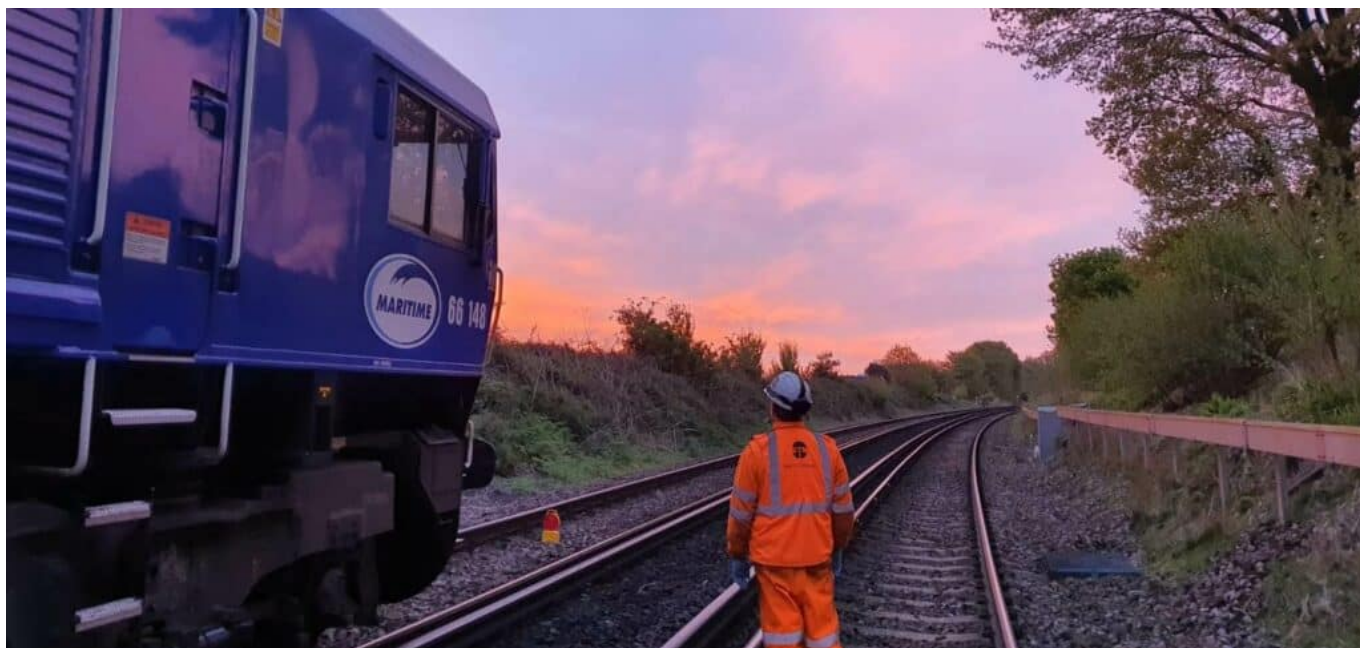


Photo credit: SigTech Rail