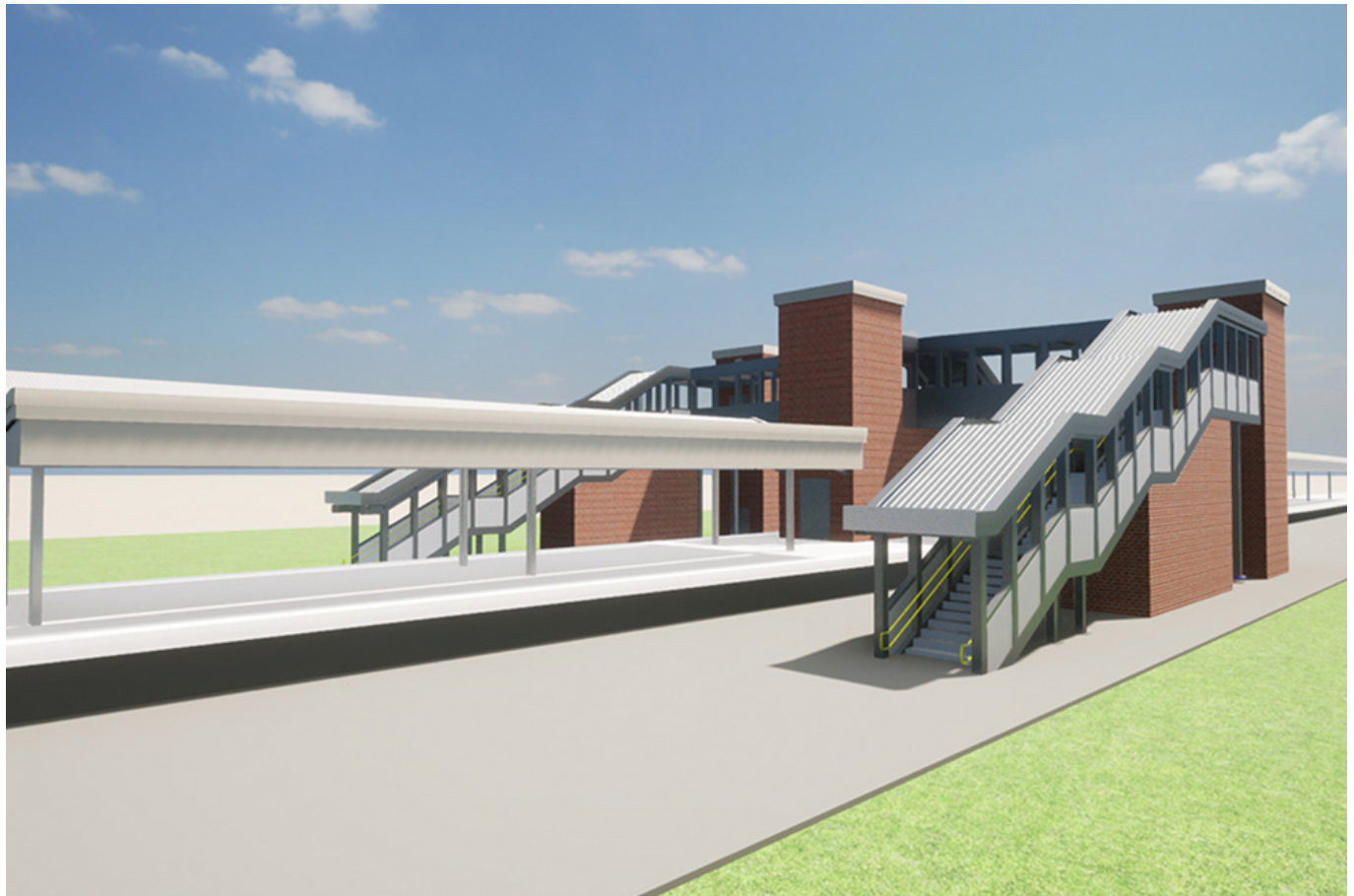


Work underway at Motspur Park station in south London

March 29, 2023



Network Rail has announced that £8.9 million is being invested in new lifts and walkways installed among other upgrades at Motspur Park station in south London.

Network Rail is working with South Western Railway and the London Borough of Merton Council to install a step free footbridge as part of the Government's Access for All programme, funded by the Department for Transport (DfT).

The new, covered footbridge will replace the existing structure and provide full access to lifts and stairs to the central platforms, making it easier for customers to navigate their way around the station.

New lighting and security cameras will also be installed on and around the lifts and bridge to help increase visibility and improve security in the station.

Network Rail's team of engineers will start construction this Friday (31 March) with the footbridge expected to be completed and open to passengers in early 2024. The scheme is the latest investment by Network Rail in the south London area which is a key commuter route.

Customers should note that during construction access to the station will only be available from the west side of the station via Claremont Avenue.

Oma Megbele, Network Rail's commercial scheme sponsor, said: "We're really pleased to see this project get underway. It's important that our stations are accessible so that all customers can navigate their way round them travel on the railway with ease and comfort.

"We're working closely with our partners at South Western Railway, Merton Council and the local community to ensure we minimise disruption to customers and local residents throughout the work."

Councillor Stephen Alambritis, Cabinet Member for Transport at Merton Council, said: "I'm delighted that we've been able to bring improvements forward for Motspur Park station. Delivering step-free access here will hugely benefit the local community, allowing those with mobility impairments to travel further and more freely as well as bringing safety improvements for all travellers."

Stephen Hammond MP, Member of Parliament for Wimbledon, said: "I have campaigned for many years to have step free access at Motspur Park. I am delighted that the work on the new covered footbridge will now start after Easter and should be ready in 2024. I am also pleased that Network Rail and South Western Railways are working to minimise disruption to local residents throughout the works."

David Wilby, SWR's route development manager, said: "The new footbridge at Motspur Park will be important for all of our customers, especially those with reduced mobility who require lifts to gain access to the platforms. This is just one of the six multi-million-pound accessibility projects that will be completed at South Western Railway stations by 2024, which is thanks to both a significant investment by the Access for All team and, in this case, the hard work, funding and long periods of campaigning by our stakeholders."

Photo credit: Network Rail